

Introduction

Synovel Collabsuite is an Open Source technology based collaboration solution that is integrated and cost-effective. It provides robust email, calendaring and instant messaging functionality for enterprises by harnessing the power of Linux server platform. The highly integrated nature of the solution delivers greater productivity and administrative ease.

Features

For End-users



Email

SMTP, POP and IMAP, Indexed Quick Search, Conversations, Tagging, Signing and Encryption, Shared Folders, Anti-spam/virus and Phishing detection



Calendaring

Event Scheduling, Invitations, Free/Busy Info, Timezones, Tasks, Recurrence and Alarms, Multiple Views, Agenda List, CalDav



Contacts and Instant Messaging

Global Addressbook via LDAP, Chat, Buddy Lists, Work Groups, Presence Info, Chat Archiva



Multi-mode Access

Access email anywhere on web or mobile, on a range of mobiles. Desktop client for Windows and Linux. Can use other clients - Outlook / Thunderbird. Rich web access on all browsers

For IT Admins



Web Admin Panel

User and group management, Group or user based privileges, quotas and permissions. Multiple domains, Service management, Advanced configuration, Server statistics/reports, Mail diagnostics



Archival and Backup

Archival of Email, Indexed Search, Search in Attachments, Archive Rules, Archival for Chat, Auditing. Backup for all data, Network backup, Space Optimization, Encryption, Easy Restore.



Windows Network Integration

Integration with Active Directory, Domain Logon / Single Sign-on, Migration of users and data from Exchange server

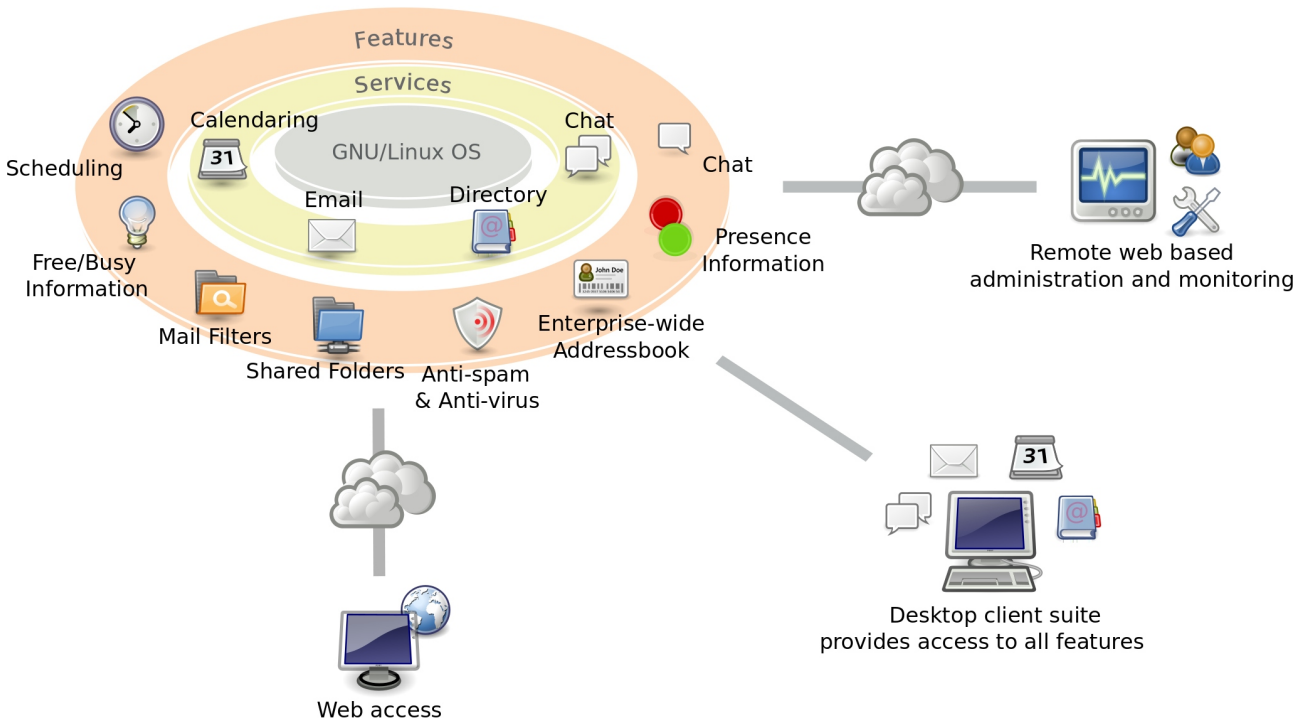


Anti spam & Anti virus

Multiple filtering techniques - Pyzor, Razor2, Grey listing, DNS blacklisting, Spam-assasin rules, Auto learning. Highly configurable. Clam AV, Automatic database updates.

Components

The major components of the product are illustrated in the following picture



Server software

The [server software](#) that runs on GNU/Linux OS, brings with it the advantages of higher security and performance. It has the following sub components

- Email - SMTP, POP3 and IMAP
- Webmail - Ajax, re-branding support
- Calendaring - Caldav protocol
- Instant messaging - Jabber protocol
- Admin console - Web based, simplified and intuitive
- Anti-Virus and Anti-Spam
- Backup and Restore
- Integration with Active Directory ®

Web Admin Panel

A web based administration console helps in remotely administering and monitoring all the services provided by the server. It provides a simple yet powerful way to manage users, services, permissions, anti-spam/anti-virus settings, data backups/archival along with a host of other features. Large organizations can create and administer a cluster of servers from this administration console.

Synovel

[+ Add User](#)
[Delete Users](#)
[Block Users](#)
[Refresh](#)

Username	Common Name	Primary group	Primary Email	Actions
admin	SCS Administrator	admins	admin@synovel.com	
bond	James Bond	employees	bond@synovel.com	
cindy	Cindy Craford	employees	cindy@synovel.com	
jeff	Jeff Robin	employees	abhishek@synovel.com	
megan	Megan	employees	megan@synovel.com	
miller	John Miller	employees	miller@synovel.com	
rajan	Chota Rajan	employees	mafia@synovel.com	
rodger	Rodger	employees	buntesting@synovel.com	
thomson	Mark Thomson	employees	asdf@synovel.com	
tickle	Tickle	employees	tickle@synovel.com	

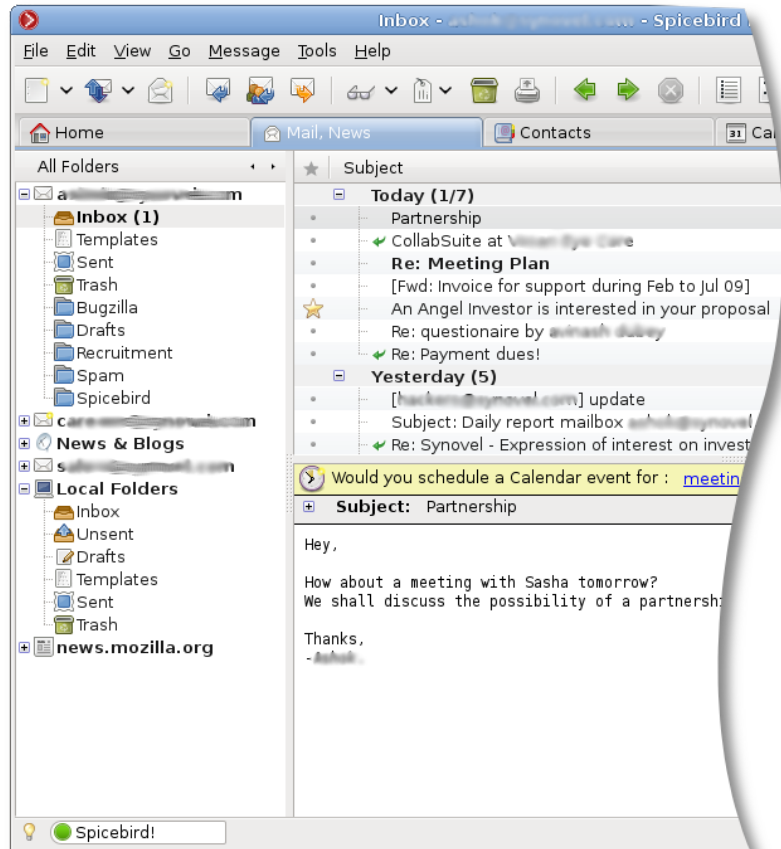
General
[Defaults](#)
[Domains](#)
Users and Groups
[Users](#)
[Groups](#)
[Service Class Groups](#)
Nodes & Services
[Nodes](#)
[Essential Services](#)
[Email](#)
[Backup and Archival](#)
[Other Services](#)
Statistics & Reports

Desktop Client Suite

A **multi-platform desktop client suite** provides integrated access to email, calendaring, instant messaging, blogs and RSS. It works on all Windows and Linux versions. A clean and intuitive interface with integration among email and collaboration tools helps in improving user productivity. You may try the free and open source version - [Spicebird](#).

It features:

- **Dashboard:** All information at one place, Inbox preview, Agenda from calendar, RSS/News feed and more
- **Email:** Conversations, Indexed search, Signing and encryption, Tags, Phishing and spam detection
- **Calendar:** Scheduling, Free/Busy info, Invitations, Tasks, Timezones
- **Chat:** Integrated into the client, Presence info, Buddy/Group lists,



Web Access

A web-client allows access to email and instant messaging functionality through a rich AJAX based web interface. It offers complete email functionality, instant messaging, enterprise wide address book and advanced settings with mail filtering. It works on all major browsers and supports re-branding.

On Mobile

Users can also access and send email on a wide range of mobile phones using the browser or via native IMAP email apps. Calendar access and sync is naively supported on iPhone and Android phones via CalDAV protocol. Support on some other mobile platforms is available through various third party sync applications.



Benefits

- **Extremely cost-effective** - Low licensing costs, runs on commodity hardware, no OS license for the server.
- **Higher productivity** - Integrated access to collaboration tools with shared data ensures simplification of day-to-day activities.
- **Easy administration** - Intuitive, simplified administration console to manage users, services, permissions, and routine administration tasks such as backups, monitoring.
- **Freedom and Control** - Open standards for communication and storage, no vendor lock-in.
- **Multi-platform compatibility** - Desktop client runs on Windows & Linux. Can unlock your desktops from Windows OS and save on OS license costs.
- **Reliable, scalable and secure** - Highly robust software based on Open Source technologies and Linux OS for the server.

Please contact sales@synovel.com or visit <http://www.synovel.com/collab> for more details.